

BFD PRINTED TABLECLOTHS

BFD custom & printed tablecloths are made from a crease resistant polyester gabardine style textile that is fully printed using a digital sublimation process. These tablecloths are light weight, ironable, and machine washable

- Lightweight and crease resistant
- Full colour photo quality printing
- NO minimum quantities
- Can match specific PMS colours
(Colour Matching Service charges may apply)

FRONT DRAPE STYLE - TABLE-3218

This "Drape" style of table-cover is constructed in 2 sections & sized with overall dimensions of 3.2 x 1.8M. It is designed to suit a table-top size of up to 1.8x0.9M with a 0.7M drop on the front and either end. The back section then has a drop of around 200mm when used on a 0.9M wide table, or 350mm on a 0.75M table. The 2 sections are joined across the front table edge.

This is the most versatile table cover as it can be used on wide size range of tables. The table size will determine the rear panel drop. Being a "Drape" style, the excess fabric drapes on the corners. All edges are double-fold hem.

FULL DRAPE STYLE - TABLE-3223 / TABLE-3221

This "Drape" style of table cover is designed for either an 1800 by 900mm or 750mm wide table-top. It is constructed in 3 sections with the joins aligning with the table-top edge. The overall size is either 3.2x2.3M (900mm deep table) or 3.2x2.1M (750mm deep table).

Being a "Drape" style, the excess fabric drapes on the corners. All edges are double-fold hem.

FLAP STYLE - TABLE-FLAP750 / TABLE-FLAP900

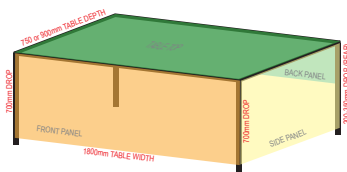
The "Flap" style table covers are designed to suit either an 1800 by 900mm or 750mm width table-top, with a 0.7M drop to the floor. As they are designed with separate panels on each drop, they do not "drape" the excess fabric on the corners. This makes for a much neater finish & look, but means the cover has to be quite close to the exact table-top size to work.

The tablecloths are light weight making for easy transport and can be machine washed and ironed if they become dirty. All edges are double-fold hem.

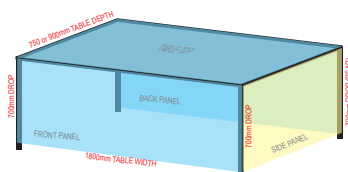
ROUND STYLE - TABLE-R1200

Designed to suit a round table-top of 1.2M diameter, this cover has a fitted skirt providing a 0.7M drop.

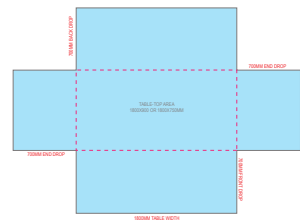
The tablecloths are light weight making for easy transport and can be machine washed and ironed if they become dirty. All edges are double-fold hem with a split in the skirt to allow easy fitting.



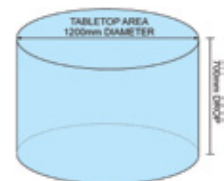
FRONT DRAPE STYLE



FULL DRAPE STYLE



FLAP STYLE



ROUND STYLE